

Bottom Load Adaptors

API Adaptors 891 Series



API Adaptors are crucial to any API bottom loading system, the API Adaptor is precisely engineered and manufactured to match with a standard API coupler. Much attention is focused on the mating surface materials allowing for considerable variations in design. The end result provides users with a wide range of applicable options to match specific needs & situations.

API Bottom Loading Adaptor 800-500-04



Loading and off-loading fuel from a transport truck is easier than ever with the bottom loading adapters from Franklin Fueling Systems. Franklin adapters help minimize spillage at the loading site, and allow the delivery driver to manage the flow rate while off-loading fuel from the truck.

5204L



Manufactured to American Petroleum Institute standard API RP-1004, which allows for positive connection to drop adapters and rack couplers such as the Dixon Bayco 5300/5400 series rack coupler.

Bottom Load Adaptor Accessories

Gravity Couplers 871 and 876 Series



Civacon's Gravity Couplers are used in the unloading process to connect the 4" API adaptor to 3" or 4" hose connections. One handed operation frees up the operators second hand for maneuvering hoses around. They mate with 4" API RP-1004 tank truck adaptors.

The Gravity Couplers come standard with aluminum bodies and Nitrile seals and hose connections which angle 15° downward for better drainage. If you want safer, faster unloads, you want Civacon Gravity Couplers.

875C Dust Cap



Civacon's 875C Series API Dust Caps are designed and tested to take the punishment of the long haul. Requiring just a one handed operation, the caps not only seal and hold pressure, but they retain their shape even if dropped or mishandled. The caps are lightweight, corrosion resistant and best of all, they utilize a special, proprietary coating that makes them extremely durable. The black finish will not chip or peel, even under extreme conditions.

Civacon's 875C API Dust Caps provide the durability - and more importantly - the pressure rated seal you demand.

Shut-Off Delivery Elbow



Civacon's 70TT series Shut-Off Elbow helps prevent accidental spills by automatically shutting off product flow if the elbow becomes detached during unloading.

Tight Fill Elbows

UTF 40



UTF40 Advantages

1. Handle does not require a locking feature (cams over center)
2. Adjustable linkage (linkage can be adjusted in the field, for older worn adapters)
3. Brass Cams are solid (no rollers)
4. Available in two heights (21.5" or 18.0")
5. Anti-Spill Tube available for UTF40 short (required in some Canadian Provinces)
6. Optional Parts TF30x40AF, TF40CF, TF30x40CF, TF40TF, TF30x40TF
7. Also available with Side Seal End (fabrication)
8. All PT elbows have interchangeable Cam Arm Assembly Kits
9. Half the moving/replacement parts, lightest weight in the industry. Made in the U.S.A.

880-455-01



Lightweight, 4" product drop elbow. Designed to mate with all 4" standard top seal tight fill adaptors.

80TT



Vapor recovery elbow for dual point applications. Available with 3" male cam and groove adaptor (shown), 4" male cam and groove adaptor or 3" female NPT adaptor. 5 degree and angled outlet. Lightweight 12 lb. design.

Tight Fill Elbows

Surelok Delivery Elbow

65TT



Civacon engineers its product delivery elbows to deliver optimal flow, long term durability and value. We also recognize that operator safety and ease of use are equally important. The ergonomic design of the 65TT Series SureLok Dual Point Drop Elbow makes this product easy to handle and connect.

6200 Series



- Available in standard or tall heights to accommodate deep fill boxes
- Rugged modular cast aluminum construction
 - Most parts are common throughout the Bayco elbow line, making any necessary maintenance a breeze.
 - Grease nipple enables the greasing of the lever stem, and acetal bushings help keep everything moving smoothly, even in the harshest of conditions.
 - Bolt on inlets allow the inlet to be changed without having to worry about galling of threaded inlets.
 - Ball handle lever enables the operator to easily and positively engage the solid bronze locking arms, onto the underground adapter.
 - Biofuel compatible up to E100 (100% Ethanol) and B20 (20% Bio Diesel).

6400 Series



- Available in standard or tall heights to accommodate deep fill boxes
- Rugged modular cast aluminum construction
 - Many parts are common throughout the Bayco elbow line, making any necessary maintenance a breeze.
 - Grease nipple enables the greasing of the lever stem, and acetal bushings help keep everything moving smoothly, even in the harshest of conditions.
 - Bolt on inlets allow the inlet to be changed without having to worry about galling of threaded inlets. (Bayco elbow inlets.)
 - Ball handle lever enables the operator to easily and positively engage the solid bronze locking arms, onto the underground adapter.
 - Top connection is the vapor outlet; lower connection is the fuel delivery inlet.
 - Biofuel compatible up to E100 (100% Ethanol) and B20 (20% bio diesel).

Air Interlock Valves

Three Way Air Valves

880-150



Play it safe with this lightweight valve that locks up the brakes on the trailer, preventing it from leaving the loading rack while connected to the loading arm. This three-way air valve can be used normally open or normally closed, has an adjustable stem, and comes with standardized TTMA and API mounting holes. The anodized aluminum valve is used on all API bottom loading adapters and all Vapor Check Valves.

200 and 201 Series Air Interlock Valves



The Model 200 and 201 air interlock valves are installed on bottom loading adapters and vapor recovery fittings to lock the brakes to prevent driveaways during loading. Pneumatic valves can be used in a number of different applications for additional safety features.

5000AIR



Roller ball plunger pneumatic interlock, ideal for use on cabinet doors, Baylast™ seals.

Internal Emergency Valves



Available in 3", 4", and 6" in aluminum and stainless steel and various seal materials. Available from Betts, Knappco, Morrison Brothers, and several other manufacturers.

Tank Truck Manholes



Available in aluminum, steel, and stainless steel. Available in 8", 10", 16", and 20" in various configurations for petroleum and chemical transports.

Pressure Domes



Available in 6", 10", 20", and 24" in aluminum, steel, and stainless steel. Available in ASME certification.

Sliding Valve



Available in 4" and 6" in stainless steel and steel with TTMA and ANSI flange and thread configurations.

Lever Gate Valves



Available in 2", 3", 4", and 6" configurations. All brass construction. Maximum 45 PSI.

Piston Valves



Available in 4" and 6" threaded and flanged. All brass construction. Maximum 45 PSI.

Wet-R-Dri Valves

Butterfly Valve



Available in 2"-8" in aluminum and grey iron construction. Available with Buna, Viton, and Urethane discs and seals. TTMA and ASA flange patterns. With locking and non-locking handles.

Pneumatic Valves



Available in 2"-8" in aluminum and grey iron construction. Available in Buna, Viton, and Urethane discs and seals. TTMA and ASA flange patterns. With locking and non-locking handles. Air to open spring to close or spring to open air to close.

Pneumatic Sliding Valves



Available in 4" and 6" in steel and stainless steel construction. They are available in TTMA, ANSI, and Sump flange patterns.

Pneumatic Butterfly Valve

Bradford Actuator



Available in 1 1/2"-12". Cast iron body, ductile iron disc. Air to open spring to return or air to open air to return. ANSI Class 150# flange configuration.

Air Actuated Ball Valves

Bradford Actuator



Available in 1/4"-4" NPT threaded. Available in brass and stainless bodies. They are available in 2 way and 3 way configurations. Air to open spring to close or air to open air to close. 600 PSIG, WOG.

Hydraulic Valves

Sliding Gate Valve



Available in 4" and 6" in steel and stainless steel construction. In TTMA and ANSI construction.

Manual Valves

Hose Valve



Available in 3" and 4" in steel, aluminum, and stainless steel construction. TTMA flange X flange or TTMA flange X male thread. Also available grooved X grooved. MAWP 50PSI.

Gate Valve



Available in ¼"-4" in brass and stainless construction. Rated 200PSI WOG.

Ball Valve



Available in ¼"-4" threaded NPT. Available in brass and stainless construction. Locking and non-locking models.

Hydrolet Valve



Available in 3" and 4" with stainless steel bodies with various seal and gasket options. They are available in 3 body styles. With flanged or threaded outlets, Quick Removable Bonnet. Steam jacketed models available.

Chemical Hydraulic Valve



Available in stainless steel construction. 4" x 4" and 4" x 3" TTMA flange patterns. Teflon seals.

Hydraulic Pump



For use with any hydraulic operated valve. Internal bypass pressure set at approximately 3000PSI.

Vapor Vents and Accessories

T195SV



Civacon's T195SV Vapor Recovery Vent for 20" manholes has improved flow and less pressure drop. It will retro-fit all TTMA flanged vapor vents and improves installation by adding a new rotatable design.

611 Series Vapor Recovery Adaptors



Our 611 Series popped vapor recovery or 610 Series non-popped vapor recovery adaptors contain the vapors and condensation within the vapor line, minimizing unwanted driver exposure and vapor loss into the atmosphere. The poppet design also ensures that vapor lines are properly connected during unloading.

633LVB Vapor Recover Adaptor



Civacon's 633LVB high-flow, low pressure drop popped vapor recovery fitting permits simultaneous multiple compartment loading at +1000GPM without exceeding the pressure rating of the PV vents. The same high-flow design delivers faster unloading, too.

1711T Vapor Caps



Fits all 4" Vapor Recovery Adaptors.

Manifolds

Single and Dual Manifolds



CivaFlo™ Air-Operated Product Manifolds by Civacon for Straight Pump Trucks helps improve the quality, productivity and safety of your metered delivery operation.

Available in both Single and Dual Versions, for one and two pump applications, our Manifolds are the right choice for today's hose delivery applications.

5 Compartment Manifold



Manifold valve assemblies available in 2", 3", and 4". Available in steel and aluminum, in pressure and non-pressure, and multiple compartment configurations.

4 Compartment Mechanical Operator



Mechanical operator is available from 1-7 compartments.

4 Compartment Air Distributor Valve



The Betts air distributor is designed as a corrosion resistant, modular, lightweight and compact air distribution system that can be used to control any sequential or non-sequential air operated valve or vent system.

Tank Truck and Overfill Equipment

Metro On Board Monitors



The new Metro monitor sends and receives "digital" operation and diagnostic signals from the probes and sockets. Civacon's new Metro Overfill Detection System has been designed with a digital "bus" backbone. Much like the industry-standard "busses" in today's trucks, Metro's Probes, API Sockets and Accessories each have a unique digital address and communicate with the Metro monitor over Civacon's unique Plug-N-Load™ wiring system.

Rom II On Board Monitors



Companies involved in the transportation and handling of hazardous bulk commodities rely on real world safeguarding against costly overfills every day and they rely on Civacon to provide it. The ROM™ II Overfill Detection Monitor is manufactured to deliver years of worry-free performance under the most rigorous conditions.

5 Wire On Board Monitors



The Civacon 5 Wire On Board Monitor is a truck mounted monitoring and control system which will enable a tank trailer to load at optic, thermistor or float petroleum loading racks while using only optic sensors. If all of the optic sensors do not detect any liquids, the monitor provides the necessary signal information to the appropriate API sockets to enable loading of the tank trailer.

Tank Truck Overfill Equipment

Rom 2 Wire Overfill Probes



ROM 2 Wire Overfill Probes have a red and black wire and are fully compatible with all ROM monitors. Civacon's completely new sensor and housing has enhanced technology and design features.

Quick Start Overfill Probes



Civacon offers 2 Wire Quick Start Overfill probes equipped with white and black wires and is fully compatible with all ROM monitors and Rack Monitors.

ROM II Single API Sockets Optic and Thermistor



Civacon's latest Optic and Thermistor Sockets feature hard-coated nose ring and J-slots for longer life.

Placards and Placarding Systems



Diamond placards are available with a variety of preprinted UN numbers
Available as a decal, metal sign, or rigid vinyl material
Two-sided rigid vinyl preprinted placards available

Duo-Flip® Placarding System



For the ultimate in convenience, flexibility and time saving, Duo-Flip allows you to change both DOT placard legends and ID numbers in seconds to match your commodity. Self-contained, .032 aluminum alloy placard panels slide over easily on four aluminum hinges. Notches in the aluminum panels allow you to flip numerals without interference. Panels lock in place with four stainless steel pressure fasteners.

Slidemaster® Placard Holder



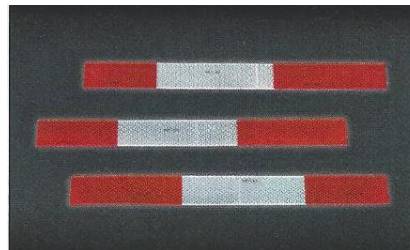
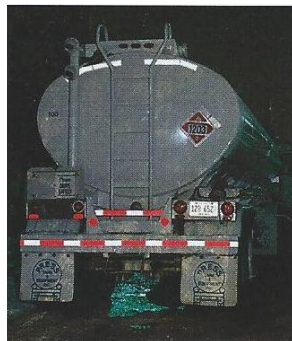
Slidemaster Placard Holders for Trucks meet Labelmaster's exacting standards for top quality construction. These slide-in placard holders feature Easy-Off Ramp, an innovative device that glides placards over the retaining clip, so they slide in or out without a hitch. Built with rugged riveted assembly, drain hole and stainless steel clip, Slidemaster holders accommodate metal placards and non-adhesive placards in polycoated tagboard and 20-mil rigid vinyl.

Truck Markings

Decals



Conspicuity Tape



Roto Tag

